

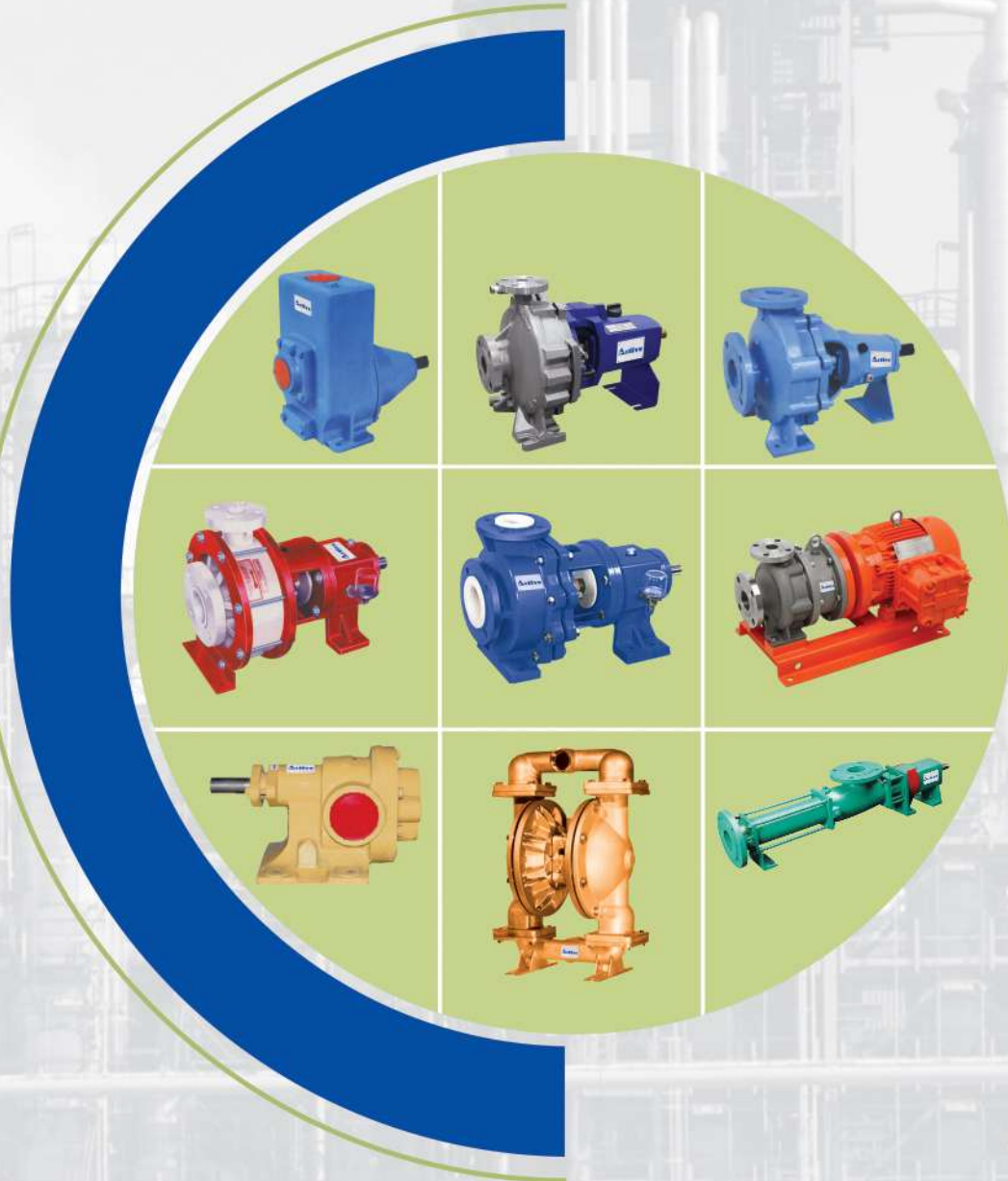


An ISO 9001 - 2015 Certified Company

ActiveTM Engineering Co.

Manufacturer & Exporter

Since : 2002



SELECTION • QUALITY • PERFORMANCE • SERVICE

www.activeseals.com



PUMPS SERIES



SELF PRIMING MUD PUMP

SELF PRIMING NON CLOG PUMP

ASG SERIES / ASP SERIES

Application

Sewage, Effluent disposal, Slurry handling, Irrigation, Horticulture, Marine application civil construction sites, Mobile machinery, Public utilities.

Technical Data

Capacity	: up to 75 m ³ / hr.
Head	: up to 35 mtr.
Suction Head	: up to 7.5 mtr.
Material	: CI, Bronze, Gun metal, Stainless steel and other alloys
Viscosity	: up to 100 mm ² / Sec.
Max. Solid Hand Size	: up to 25 mm
Sealing	: Soft gland packing

MECH. SEAL FITTED

ASM SERIES

Application

Dewatering swamp, Trenches & Basements, Effluent treatment plants, Swimming pools, Marine application, Transfer for petrol, Diesel, Kerosene, Sprits, Gasoils etc.

Technical Data

Capacity	: up to 75 m ³ / hr.
Head	: up to 35 mtrs.
Suction Head	: up to 7.5 mtrs.
Material	: CI, Bronze, Gun metal, Stainless steel and other alloys
Viscosity	: up to 100 mm ² / Sec.
Max. Solid Hand Size	: up to 25 mm



VERTICAL INLINED SELF PRIMING CENTRIFUGAL PUMP

ASTP SERIES

Application

Chemical industries, Pharmaceutical industries, Excellent for handling solvents from the drum and tank farm.

Technical Data

Head	: up to 35 mtr.
Flow	: up to 21 m ³ / hr
Temp	: up to 150 °C
M.O.C.	: CAST IRON (CI), SS-316
RPM	: 1450 RPM
Type	: Mechanical seal fitted



CHEMICAL PROCESS PUMP

AMC SERIES

Application

The chemical process pump "AMC" is widely used for chemical, Petrochemical industries. Media which can be easily pumped are Acids, Caustic, Amonia, Phosphate, Dyes, Oils, Solvents, Alcohol, Aromatics etc. Also suitable for Textile, Food, Paper & Pulp, Pharmaceuticals etc.

Technical Data

Max. Capacity	: up to 400 m ³ /hr. Max.
Head	: up to 150 mtr.
Pressure	: up to 16 bar
Temperature	: up to 200 °C
Material	: Cl, CS, SS-304, SS-316 Other alloys
Impeller	: Closed / Semi Open
Flanges	: As per ISO 7005 & ANSI-B-16.5 PN16



CENTRIFUGAL PUMP

AMG SERIES

Application

Various application included transfer circulation pump for cold and hot water system, Marine installation, Fire fighting application, Irrigation, Agriculture etc.

Technical Data

Max. Flow	: up to 400 m ³ /hr.
Max. Head	: up to 100 mtr.
Max. Pressure	: up to 10 bars
Max. Temp.	: 140 °C
Standard Material	: Cl, Bronze & Gun metal
Shaft & Shaft Sleeve	: Stainless steel
Impeller Type	: Closed / Semi open



CHEMICAL PROCESS PUMP

CPC / CPC-A SERIES

Application

The chemical process pump "CPC" is widely used for chemical, Petrochemical industries. Media which can be easily pumped are Acids, Caustic, Amonia, Phosphate, Dyes, Oils, Solvents, Alcohol, Aromatics etc. Also suitable for Textile, Food, Paper & Pulp, Pharmaceuticals etc.

Technical Data

Max. Capacity	: up to 400 m ³ /hr. Max.
Head	: up to 150 mtr.
Pressure	: up to 16 bar
Temperature	: up to 200 °C
Material	: Cl, CS, SS-304, SS-316 Other alloys
Impeller	: Closed / Semi open
Flanges	: As per ISO 7005 & ANSI-B-16.5 PN16



CENTRIFUGAL PUMP

CP SERIES

Application

Various application included transfer circulation pump for cold and hot water system, Marine installation, Fire fighting application, Irrigation, Agriculture etc.

Technical Data

Max. Flow	: up to 400 m ³ /hr.
Max. Head	: up to 100 mtr.
Max. Pressure	: up to 10 bars
Max. Temp.	: up to 140 °C
Standard Material	: Cl, Bronze & Gun metal
Shaft & Shaft Sleeve	: Stainless steel
Impeller Type	: Closed / Semi open



CENTRIFUGAL POLYPROPYLENE PUMP

AXP SERIES / APPL SERIES

Application

Water treatment Plant, Effluent treatment plant, Transfer and Loading / unloading like HCL, Sulphuric acid, Caustic Liquid. Scrubbing of corrosive gasses like NH₃, Co₂, So₂, L₂, F₂, BR₂ etc. Filter press for dyes & chemicals. Circulation of chemicals in metal finishing industry.

Technical Data

Head : up to 45 Mtr.
Flow : up to 50 m³ / hr.
Temp : up to 65-70 °C
M.O.C. : PP, UHMWPE
RPM : 1450 - 2900 RPM
Type : Mechanical seal / Gland type

Technical Data

Head : up to 65 mtr.
Flow : up to 300 m³ / hr
Temp : Max. 80 °C
M.O.C. : PP, UHMWPE
RPM : 1450 / 2900 RPM
Type : Mechanical seal / Gland type



VERTICAL POLYPROPYLENE PUMP

AVPP SERIES

Application

Treatment plant, electro plating & Steel rolling mills, Loading - unloading like HCl, Sulphuric acid / Alkali, Caustic liquid scrubbing of corrosive gasses like Cl₂, NH₂, BR₂, etc.; Ideal for circulation of chemical in metal finishing industry.

Technical Data

Head : up to 50 mtr
Flow : up to 45 m³ / hr
Temp : up to 70 °C
M.O.C. : PP, UHMWPE
RPM : 1450 - 2900 RPM
Pressure : 5 kg / cm²

Note : Seal less Gland less

NON METALLIC LINED PUMP

PVDF, PFA, FEP SERIES

Application

Water treatment Plant, Effluent treatment plant, Electro planting, Picking & Steel rolling mills, Transfer and loading-unloading like HCl, Sulphuric acid, Caustic acid, Scrubbing of corrosive gases like NH₃, So₂, So₃, L₂, F₂, Br₂, Cl₂, Etc.

Technical Data

Head : up to 90 mtr.
Flow : up to 200 m³ / hr
Temp : up to 100-120 °C
M.O.C. : PVDF, PFA, FEP
RPM : 2900 RPM
Type : Mechanical Seal Fitted



AIR OPERATED DOUBLE DIAPHRAGM

AODD SERIES

Application

Solvents, Slurry transfer, Barrels, Acidic Materials, High viscous liquid, Abrasive media.

Technical Data

Head : up to 50 mtr
Flow : up to 45 m³ / hr
Temp : up to 120 °C
M.O.C. : Investment Casting CF8M (SS-316), Aluminum, PP, PVDF
Max. Particle Size : 6.35 mm
Air Pressure : Max. 7 kg/cm²
Air Inlet Size : 1/4 to 1/2"
Air Exhaust : 3/4 to 1/2"
Suction Lift : Dry : 4.57 meter / Wet : 7.6 m
Teflon : Dry : 3.05 m / Wet : 6.09 m



MAGNETIC DRIVE PUMP

ACZ SERIES

Application

Use for Organics, Oil, Solvents and any thin liquids in industrial Risky liquids, Exotic materials, Acids, Alkalis, Corrosives, Toxics.

Technical Data

Head : up to 100 mtr.
Flow : up to 100 m³ / hr
Temp : up to 50 to 200 °C
M.O.C. : SS-316, SS-316L, SS-304, SS-304L
Internal Part SS-304, , Bronze, Alloy-20
RPM : 2900 RPM



HORIZONTAL SIDE SUCTION PUMP

AFPP SERIES

Application

Filter press feeding, Dyes & Intermediates, Slurry transfer
Cake transfer, ETP Plant, Sugar & Food Industries.

Technical Data

Head : up to 70 mtr
Flow : up to 110 m³ / hr
Temp : up to 110 °C
M.O.C. : CI, CI/SS, SS 304, SS 316, SS 316L, Bronze, Alloy 20 etc.
RPM : 1450 - 2900 RPM
Type : Mechanical seal / Gland type



Note : Only Positive Suction Head

ROTARY GEAR PUMP / TWIN GEAR PUMP

AGP SERIES

Application:

To deliver variety of light and viscous liquid such as Oil, Fats, Coal tar, Paints, Molasses. Highly viscous materials and liquids. Paints, Ammonia, Glycerin, Grease etc.

Technical Data

Head : up to 120 mtr
Flow : up to 80 m³ / hr
Temp : up to 250 °C
M.O.C. : CI, CI/SS, SS 304, SS 316, SS 316L, Bronze
RPM : 1450 - 2900 RPM
Type : Mechanical seal / Gland type



SCREW PUMP

APPT SERIES

Application

Effluent treatments, Pulp & Paper, Sugar & Distilleries, Chemical & Petrochemicals, Ceramics & Insulator, Starch industries, Cosmetics & Medicines, Sweets & Confectionaries, Dairy, Paints & Varnishes, Fruits & Vegetable processing, Milling, Beverage Industry.

Technical Data

Pressure : up to 30 kg/cm²
Discharge Size : 25 mm to 100 mm
Flow : up to 100 m³ / hr
Temp : up to 120 °C
M.O.C. : CI, SS-304, SS-316, CS, Alloy-20
Stator MOC : Natural, Nitrile, Neoprene, Epdm, Hypalon, Viton, Food grade & Special quality rubber
RPM : Up to 600 RPM



LOBE PUMP

Application

Cream transfer, Sugar solution, Palmolein oil, Glucose transfer all food industries.

Technical Data

Head : up to 35 mtr.
Flow : up to 30 m³ / hr
Temp : up to 90 °C
M.O.C. : SS-304, SS-316
RPM : 400 to 960 RPM
Type : Mechanical seal fitted



THERMIC FLUID PUMP



AIR COOLED HOT OIL PUMP



THERMIC FLUID PUMP WATERCOOLED-CPP SERIES AIR COOLED-ACP SERIES

Application

Thermic fluid transfer

Technical Data

Head : up to 90 mtr.
Flow : up to 350 m³ / hr
Temp : up to 350 °C
M.O.C. : WCB
RPM : 2900 RPM
Type : Gland Fitted/Mechanical seal fitted

HIGH PRESSURE MULTI STAGE BOILER FEED PUMP ABFP SERIES

Application

Boiler feed, Marine, Fuel oil, Power Plant, Industrial clear water condensate water, Multi storied building water supply.

Technical Data

Head : up to 250 mtr
Flow : up to 20 m³ / hr
Temp : up to 105 °C
M.O.C. : CI, CS, Bronze, CI/SS



VERTICAL INLINE MULTISTAGE PUMP ACV SERIES

Application

For thin, Non-explosive, Non-containing solid particles or Fibers, Noncorrosive liquids are suitable, Liquid transfer, Circulation and pressure boosting of cold or hot clean water supply systems, Water supply systems pressure boosting systems, Liquid transfer and irrigation works.

Technical Data

Head : up to 160 mtr.
Flow : up to 35 m³ / hr
Temp : up to 120 °C
M.O.C. : SS-304, SS-316
RPM : 2900 RPM



BARREL PUMP

HAND OPERATED / MOTORISED / PNEUMATIC SERIES

Application

Use for unloading barrel

Technical Data

Head : up to 8 mtr.
 Flow : up to 10 m³ / hr
 Temp : up to 35 °C
 M.O.C. : SS-316, PP



VERTICAL LONG SHAFT SUMP PUMP

AVSP SERIES

Application

The "Active" sump pump is suitable for handling thin, clean or slightly contaminated liquids, such as water, Cooling water, Effluent, Cleaning products, Chemicals and hydrocarbons. Sulphuric acid application, Acid transfer, Aquariums, Chemical processing, Chloralkali, General processing industry, Light slurries, Organic chemicals, Polymers, Petrochemical processing, Slurries, Solvents, Waste processing.

Technical Data

Capacity : up to 250 m³ / hr
 Head : up to 60 Mtr.
 Discharge Size : 25 mm to 125 mm
 Temperature : up to 60 °C
 Pump Length : up to 4 Mtr.
 RPM : 1450 - 2900 RPM
 Pressure : up to 6 kg/cm²
 M.O.C. : C.I., C.S., SS-304 / 304L, SS316 / 316L, Bronze, Alloy-20, CD4MCU, Hast alloy B & C, etc.



SEWAGE / SLURRY SUBMERSIBLE PUMP

ASDT SERIES

Application

Muddy water transfer, Swimming pool, Dewatering of ponds, Basement of huge building, Power plant, Effluent, Transfer, ETP, STP, Waste water treatment plant, Used in Hotel, Hospital, Railways, Dairy, Chemical, Sugar, Steel, Cement, Food, Beverages Etc.

Technical Data

Head : up to 45 mtr.
 Flow : up to 200 m³ / hr
 Temp : up to 45 °C
 M.O.C. : CAST IRON (CI), CAST STEEL (CS)
 Internal part SS-304, SS-316, Bronze, Alloy-20



MONO BLOCK PUMP

AMBP SERIES

Application

Cooling tower, Water supply for domestic use in apartments, Hostels, Swimming pools, Automobile service station. Power plant, Railway line

Technical Data

Head : up to 60 mtr
 Flow : up to 120 m³ / hr
 M.O.C. : CI, CS, SS 316
 RPM : 2900 RPM
 Power Rating : Single phase & Three phase





MECHANICAL SEALS FOR PUMPS

A10U



Applications

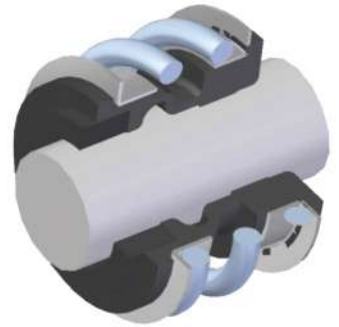
- Submersible pump
- Sewage pump
- Water pumps

Seal Characteristics

- Single acting
- Unbalanced
- Single helical coil spring
- Independent of direction of rotation

Operating Limit

Temperature : -20.....+180 °C
Pressure : 12 Bar (Max.)
Velocity : 20 m/sec



A20U



Applications

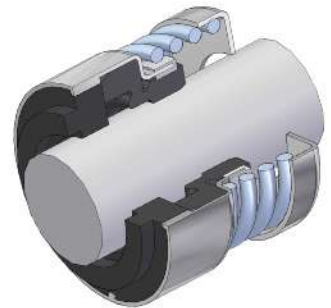
- Submersible pump
- Water pumps

Seal Characteristics

- Single acting
- Unbalanced
- Single helical coil spring
- Independent of direction of rotation

Operating Limit

Temperature : -20.....+180 °C
Pressure : 12 Bar (Max.)
Velocity : 20 m/sec



A30U



Applications

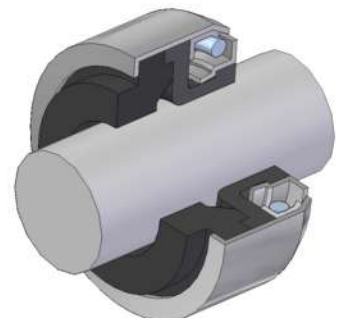
- Submersible pump
- Water pumps
- Water and waste water technology

Seal Characteristics

- Single acting
- Unbalanced
- Single conical coil spring
- Short axial installation length

Operating Limit

Temperature : -20.....+120 °C
Pressure : 6 Bar (Max.)
Velocity : 10 m/sec



A45U



Applications

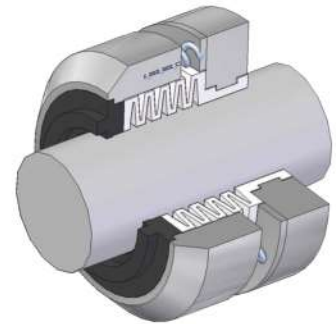
- Extremely corrosive services

Seal Characteristics

- Single acting
- Unbalanced
- Outside mounted
- Multiple spring

Operating Limit

Temperature : -45.....+120 °C
Pressure : 6 Bar (Max.)
Velocity : 20 m/sec



A50B



Applications

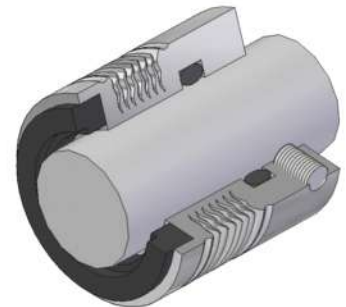
- Chemical
- Petrochemical
- Refinery
- Corrosive chemicals

Seal Characteristics

- Single acting
- Inherently balanced
- Inside mounted

Operating Limit

Temperature : -20.....+200 °C
Pressure : 18 Bar (Max.)
Velocity : 20 m/sec



A55B



Applications

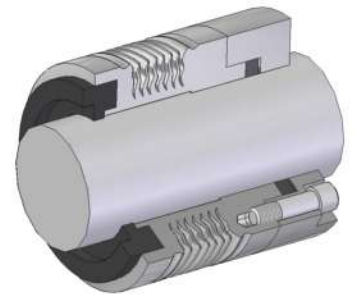
- Petrochemical
- Petroleum refinery
- Refinery

Seal Characteristics

- Single acting
- Inherently balanced
- Inside mounted

Operating Limit

Temperature : -20.....+350 °C
Pressure : 20 Bar (Max.)
Velocity : 20 m/sec



A65U WEDGE & A60U O-RING A65B WEDGE & A60B O-RING



Applications

- General Chemicals
- Petrochemical
- Light Hydrocarbons
- Petroleum refinery

Seal Characteristics

- Single acting
- Unbalanced / Balanced
- Inside mounted
- Single helical coil spring
- Independent of direction of rotation

Operating Limit

Temperature : -60.....+200 °C
Pressure : 10 / 35 Bar (Max.)
Velocity : 20 m/sec



**A75U WEDGE & A70U O-RING
A75B WEDGE & A70B O-RING**



Applications

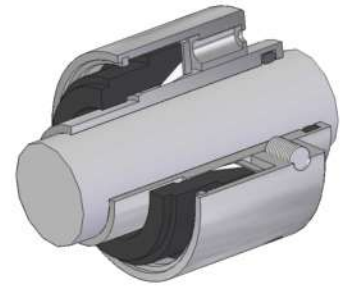
- General Chemicals
- Petrochemical
- Light Hydrocarbons
- Petroleum refinery

Seal Characteristics

- Single acting
- Unbalanced / Balanced
- Inside mounted
- Multi spring
- Independent of direction of rotation

Operating Limit

- Temperature : -60.....+200 °C
 Pressure : 10 / 35 Bar (Max.)
 Velocity : 20 m/sec



A77RB



Applications

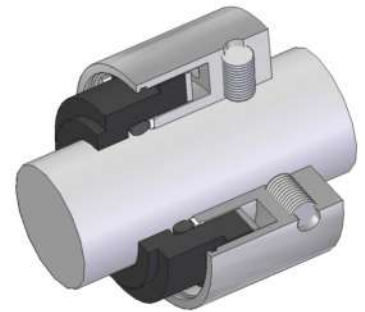
- Corrosive chemical
- Hydrocarbons
- General & light chemical

Seal Characteristics

- Single acting
- Reverse balanced
- Outside mounted
- Multi spring
- Independent of direction of rotation

Operating Limit

- Temperature : -60.....+180 °C
 Pressure : 25 Bar (Max.)
 Velocity : 20 m/sec



A85U V-PACKING & A80U O-RING



Applications

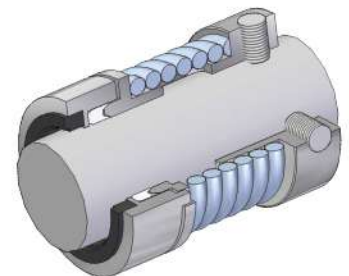
- Suspended solids slurry
- General chemical slurry
- Crystallizing slurry
- Saturated chemical slurry

Seal Characteristics

- Single acting
- Unbalanced
- Inside mounted
- Single helical coil spring
- Independent of direction of rotation

Operating Limit

- Temperature : -20.....+200 °C
 Pressure : 14 Bar (Max.)
 Velocity : 20 m/sec



A100U



Applications

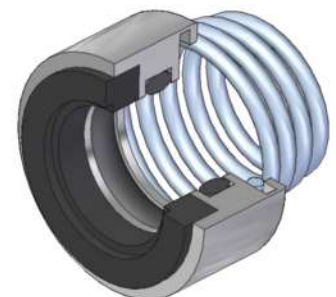
- Circulation pumps for central heating
- Sewage & submersible pumps
- Water pumps
- Chemical process pumps

Seal Characteristics

- Single acting
- Unbalanced
- Inside mounted
- Single conical coil spring
- Dependent of direction of rotation

Operating Limit

- Temperature : -20.....+120 °C
 Pressure : 10 Bar (Max.)
 Velocity : 20 m/sec



A110U



Applications

- Circulation pumps for water and heating systems
- Chemical process pumps
- Submerged pumps
- Sewage pumps
- Mud slurry pumps handling highly viscous fluids
- Textile industry

Seal Characteristics

- Star seal
- Single acting
- Unbalanced
- Inside mounted
- Single helical coil spring
- Independent of direction of rotation

Operating Limit

- Temperature : -50.....+175 °C
- Pressure : 10 Bar (Max.)
- Velocity : 20 m/sec

A130B



Applications

- Easy to maintain
- Light weight
- Long lasting

Seal Characteristics

- Single acting
- Balanced
- Inside mounted
- Multi spring
- Independent of direction of rotation

Operating Limit

- Temperature : -25.....+200 °C
- Pressure : 25 Bar (Max.)
- Velocity : 20 m/sec

A140U



Applications

- Slurry Pump
- Pump and paper
- Sludge & syrup pump
- Chemical, Petrochemical & Refinery

Seal Characteristics

- Single acting
- Unbalanced
- Inside mounted
- Single helical coil spring
- Independent of direction of rotation

Operating Limit

- Temperature : -45.....+200 °C
- Pressure : 5 Bar (Max.)
- Velocity : 20 m/sec

CARTRIDGE SEAL



A47U



A48U





MECHANICAL SEALS FOR AGITATOR

A77RB/D



Applications

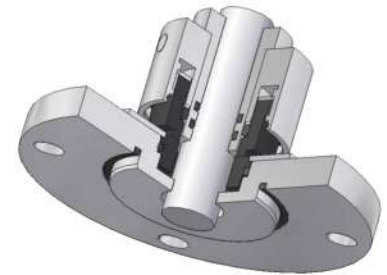
- Food products
- Pharmaceutical products

Seal Characteristics

- Single acting
- Reverse balanced
- Cartridge unit
- Independent of direction of rotation
- Dry running

Operating Limit

- Temperature : Amb.....+120 °C
Pressure : Vacuum8 Bar (Max.)
Velocity : 300 RPM (Max.)



A77RB/WB WITH BEARING & A77RB/W WITHOUT BEARING



Applications

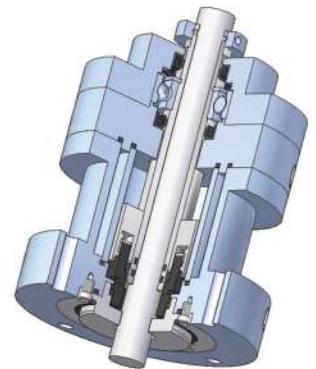
- General light chemicals
- Food products
- Pharmaceutical products
- Corrosive chemicals

Seal Characteristics

- Single acting
- Reverse balanced
- Cartridge unit
- Independent of direction of rotation

Operating Limit

- Temperature : Amb.....+180 °C
Pressure : Vacuum8 Bar (Max.)
Velocity : 300 RPM (Max.)



A70U/70U/WB WITH BEARING & A70U/70U/W WITHOUT BEARING



Applications

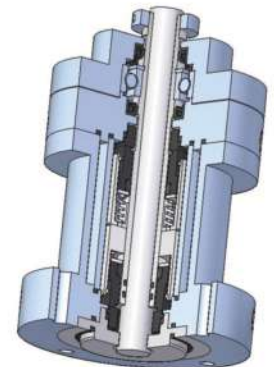
- General chemicals and its vapours
- Light hydrocarbons and its vapours
- Petrochemicals and its vapours

Seal Characteristics

- Double acting back to back seals
- Unbalanced
- Cartridge unit
- Independent of direction of rotation
- Operated with pressurised barrier fluid

Operating Limit

- Temperature : Amb.....+200 °C
Pressure : Vacuum10 Bar (Max.)
Velocity : 600 RPM (Max.)
Barrier fluid : Vessel pressure + 1.5 bar pressure



**A70B/70B/WB WITH BEARING &
A70B/70B/W WITHOUT BEARING**



Applications

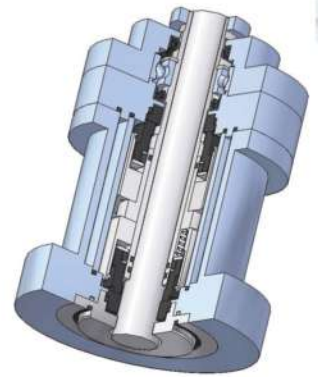
- General chemicals and its vapours
- Light hydrocarbons and its vapours
- Petrochemicals and its vapours

Seal Characteristics

- Double acting back to back seals
- Balanced
- Cartridge unit
- Independent of direction of rotation
- Operated with pressurised barrier fluid

Operating Limit

- Temperature : Amb.....+200 °C
- Pressure : Vacuum35 Bar (Max.)
- Velocity : 600 RPM (Max.)
- Barrier fluid : Vessel pressure + 1.5 bar pressure



COUPLING



FLEXIBLE COUPLING



**STEEL LEMINA
COUPLING
TYPE - RADEX**



**FLEXIBLE COUPLING
TYPE - ROTEX-GS**



**ANTI VIBRATION
MOUNT**



**PIN BUSH COUPLING
TYPE - KB & KX**



**FLEXIBLE COUPLING
TYPE - ROTEX**



**TYRE COUPLING
TYPE - KT**



STORE DEPARTMENT

We have best inventory management service we have all own patterns & spare parts. We have heavy stock of spare parts Therefore delivery time will be always minimum.

DRAWING DEPARTMENT

This department is heart of our company We are using a very special software to design our products & spare parts. In our drawing we are providing information regarding our manufacturing assembly, Dimension, Part numbering, Part MOC & All Data about products. By using all above data our manufacturing department can work easily & accurately.



CNC DEPARTMENT

We have computer numerical control machine for inhouse machine. We have excellent skill operator for CNC machine.

MACHINE DEPARTMENT

We have all types of latest machineries for manufacturing spare parts. We have professional workers for all type various machine.



Q.C DEPARTMENTS

In this department each product is properly checked by our skilled Q.C. engineers. All the products is testing, measuring and overseeing by professionals.



ASSEMBLY DEPARTMENT

We have professional assembly engineers & technical person.



TESTING DEPARTMENT

We have inhouse automatic test bed system for testing facilities. All the products are testing individually by professionals. The test bed provides all the technical data about the product.

FINISHING DEPARTMENT

We have skilled finishing supervisors. Therefore, products can reach easily in its perfect module.



OUR VALUABLE CUSTOMERS




ActiveTM
 Engineering Co.

Manufacturer & Exporter
 Since : 2002

Mfg. & Exporter of : Industrial Pumps, Mechanical Seals, Pump Spares

Plot No. 69/3, Shed No. C-2/A-3, Near Torrento Ghar Ghanti, Phase-I, 'C' Road, G.I.D.C. Vatva, Ahmedabad - 382445.

(Gujarat) INDIA. Phone : +91-9099904816

E-mail : info@activeseals.com, sales@activeseals.com

Website: www.activeseals.com

Surat Office :

F-51, Silicon Shoppers, Near South Zone Office, Udhna Main Road, Udhna, Surat - 394210 (Gujarat) INDIA. Mobile: +91-7600052072

/ 7574828243, E-mail : marketing@activeseals.com,



Scan to Website